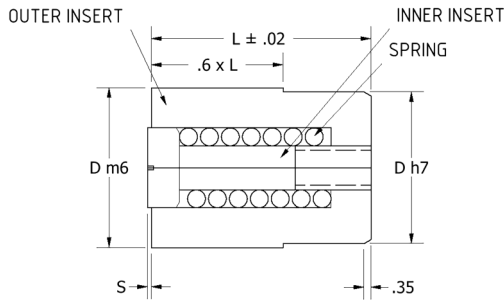


Front Removable Date Stamps



Insert Assemblies

D	L	12 Mo. w/arrow	12 Mo. w/arrow/yr*	Years/arrow**	Days/arrow**	Shifts/Arrow	Blank/Arrow
4	8	DS04A	DS04A__	DSY04A__	DSDA04-S	DSSH04-S	DSBB04-S
5	8	DS05A	DS05A__	DSY05A__	DSDA05-S	DSSH05-S	DSBB05-S
6	8	DS06A	DS06A__	DSY06A__	DSDA06-S	DSSH06-S	DSBB06-S
8	10	DS08A	DS08A__	DSY08A__	DSDA08-S	DSSH08-S	DSBB08-S
10	12	DS10A	DS10A__	DSY10A__	DSDA10-S	DSSH10-S	DSBB10-S
12	14	DS12A	DS12A__	DSY12A__	DSDA12-S	DSSH12-S	DSBB12-S
16	14	DS16A	DS16A__	DSY16A__	DSDA16-S	DSSH16-S	DSBB16-S
20	16	DS20A	DS20A__	DSY20A__	DSDA20-S	DSSH20-S	DSBB20-S

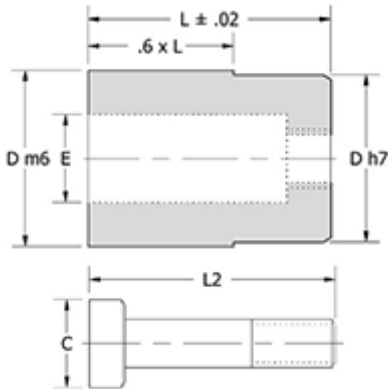
*When ordering add the year required to the part number.

**When order-

Material: 420 Stainless; 1.4021;46Hrc++/2

- ◆ Provides part traceability
- ◆ Maximum working temperature 300F
- ◆ Markings are laser etched.
- ◆ Insert changes can be done from parting line.
- ◆ Press fit installation required.
- ◆ Interchangeable with front removable or progressive C-Series

Replacement Inserts & Bodies



Dimensional Data

D (mm) Dia.	E (mm)	L (mm) Length	S (mm) Etch Depth	Tolerance (mm)	
				m6	h7
4	2,1	8	.203	+0,012 to +0,004	0 to -,12
5	3,1	8	.203	+0,012 to +0,004	0 to -,12
6	3,1	8	.203	+0,012 to +0,004	0 to -,12
8	4,4	10	.254	+0,015 to +0,006	0 to -,15
10	5,2	12	.3556	+0,015 to +0,006	0 to -,15
12	6,2	14	.3556	+0,018 to +0,007	0 to -,18
16	8,2	14	.3556	+0,018 to +0,007	0 to -,18
20	11	16	.3556	+0,021 to +0,008	0 to -,21

Replacement

D	L	12 Mo.	Years*	Days	Shifts	Blank
4	8	DSBM04	DSBY04__	DSBD04	DSBS04	DSBLB04
5	8	DSBM05	DSBY05__	DSBD05	DSBS05	DSBLB05
6	8	DSBM06	DSBY06__	DSBD06	DSBS06	DSBLB06
8	10	DSBM08	DSBY08__	DSBD08	DSBS08	DSBLB08
10	12	DSBM10	DSBY10__	DSBD10	DSBS10	DSBLB10
12	14	DSBM12	DSBY12__	DSBD12	DSBS12	DSBLB12
16	14	DSBM16	DSBY16__	DSBD16	DSBS16	DSBLB16
20	16	DSBM20	DSBY20__	DSBD20	DSBS20	DSBLB20

*When ordering add the start year required to the part number

Replacement Springs

(Package of 5)

D (mm) Diameter	Item Number
4	DSS04
5	DSS05
6	DSS06
8	DSS08
10	DSS10
12	DSS12
16	DSS16
20	DSS20

Replacement Inserts (w/ springs)

Arrow Only	Arrow & Yr.*	C	L2
DSAR04	DSAY04__	2,1	8
DSAR05	DSAY05__	3,1	8
DSAR06	DSAY06__	3,1	8
DSAR08	DSAY08__	4,4	10
DSAR10	DSAY10__	5,2	12
DSAR12	DSAY12__	6,2	14
DSAR16	DSAY16__	8,2	14
DSAR20	DSAY20__	11	16

*When ordering add the year required to the part number